

# GynoPrep® - Successful product in cancer prevention

With the appearance of gynecological cancer prevention, the methods developed continually. Better technology means higher precision, which in turn means better safety for the patients.

**GynoPrep®** contributed as one of the leading diagnostic procedure, that cervical cancer become an exception today.

## GynoPrep® by comparison with standard Pap smears:

### Standard Pap smear

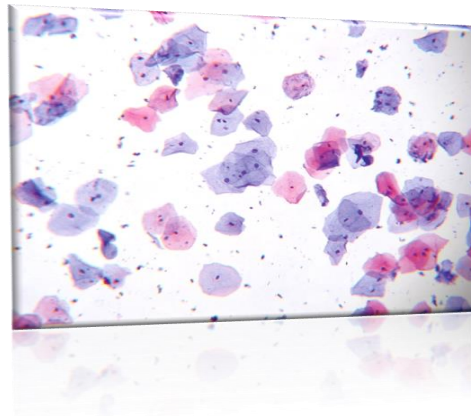


**The standard Pap smear shows disadvantages:**

- Not all cells were investigated
- Cells can be overlap
- Blood can overlap the cells

All this complicates the assessment.

### Smear with GynoPrep®



**The smear with GynoPrep® is an alternative to the normal smear:**

- Clean and clear smears
- Preparations can be better diagnosed by the doctor
- Smear will be extracted with a special sampling brush
- Extraction is absolutely painless
- After extraction the brush will be put into the **GynoPrep®** liquid then the liquid will be given to the laboratory  
→ So approx. 100% of the cells will arrive in the laboratory  
→ It allows a more exact assessment

All this is especially important to detect and treat preparatory stages of cervical cancer at an early stage.